

FotoWeb 6.5

All-new FotoWeb interface

On-demand image processing

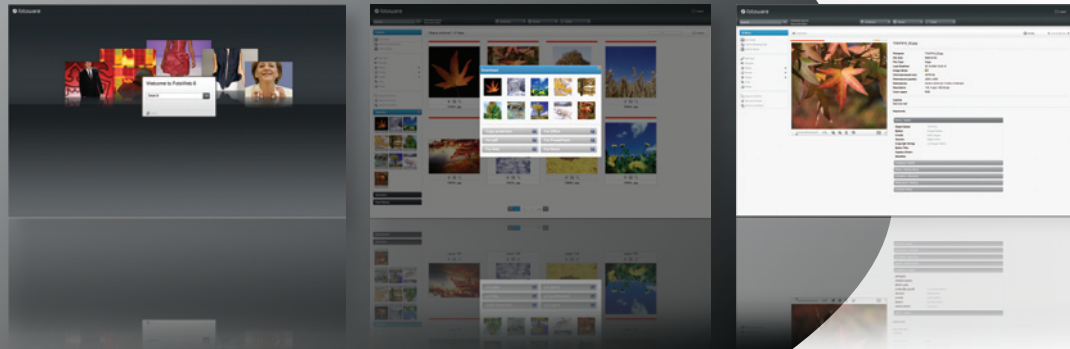
High-resolution zoom tool

Multi-file upload tool

Keyword cloud

Customizable for end users

 **fotoware**



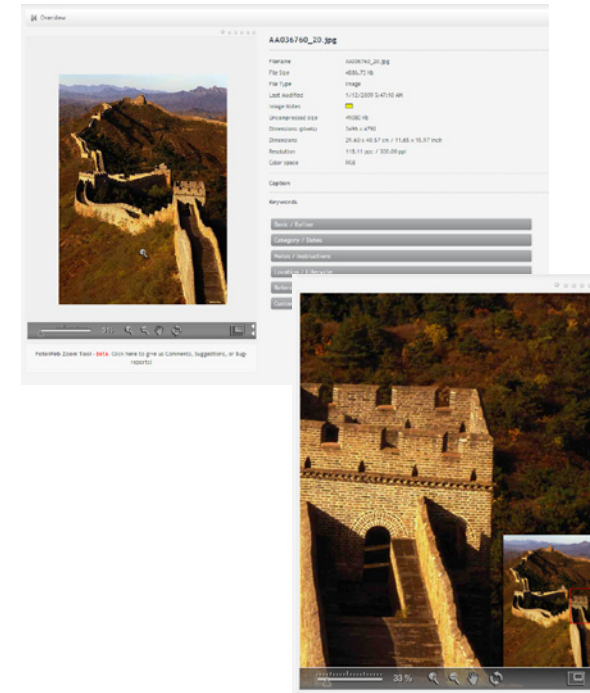
Introducing an all-new **FotoWeb** interface for greater versatility and improved workflow capabilities

The new interface offers a radically more modern look and feel with much improved functionality in several key areas.

First off, the FotoWeb user interface has been **completely remodeled** using controls more similar to those found in desktop applications to provide a more contemporary look and feel. All existing functionality has of course been maintained or improved, and **new functionality** has been added.

Having logged in, a user can easily access archives and may now adjust the thumbnail sizes dynamically without having to reload the page. Additional metadata fields can be turned on or off at the click of a button to adjust the amount of information a user sees in the thumbnail grid. Direct links can be used to select and download files and to rate pictures or other document types.

High-resolution zooming

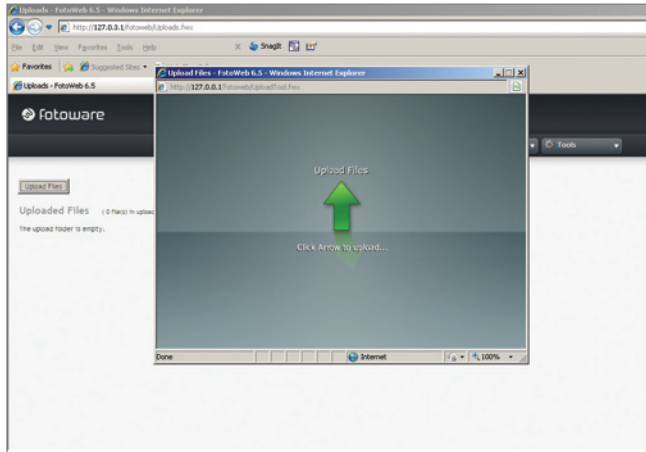


A brand new feature is the high-resolution zoom tool which lets a user zoom in and pan around the high-resolution image. A user who requires greater detail when evaluating images can thus open the preview screen and, using a Flash-based plugin, zoom in and pan the image freely. When zoomed in, an expandable navigation map makes it possible to quickly pick an area to study more closely.

Zoom and pan around using the various available tools:

- Slider – lets you adjust the zoom level by dragging
- Zoom tool – Zoom in or out in any part of the image.
- Hand tool – Pan around the image by clicking and dragging
- Reload button – reload the preview image
- Navigation map – expand or hide the navigation map.

File upload tool



The new FotoWeb Upload Tool. It allows you to select any number of files to upload using a standard system dialog box and send them all off in a single operation.

The multi-file upload tool runs in the web browser and allows a user who has upload privileges to select any number of files directly from the file system and upload them to FotoWeb. FotoStation users can of course still use an HTTP upload action to upload their files to the FotoWeb server.

Keyword cloud

With the keyword cloud we introduce a fun way of searching your FotoWeb archives. The cloud contains keywords from your archive with more frequently occurring words in larger type. Clicking on a word quickly displays the matching files.

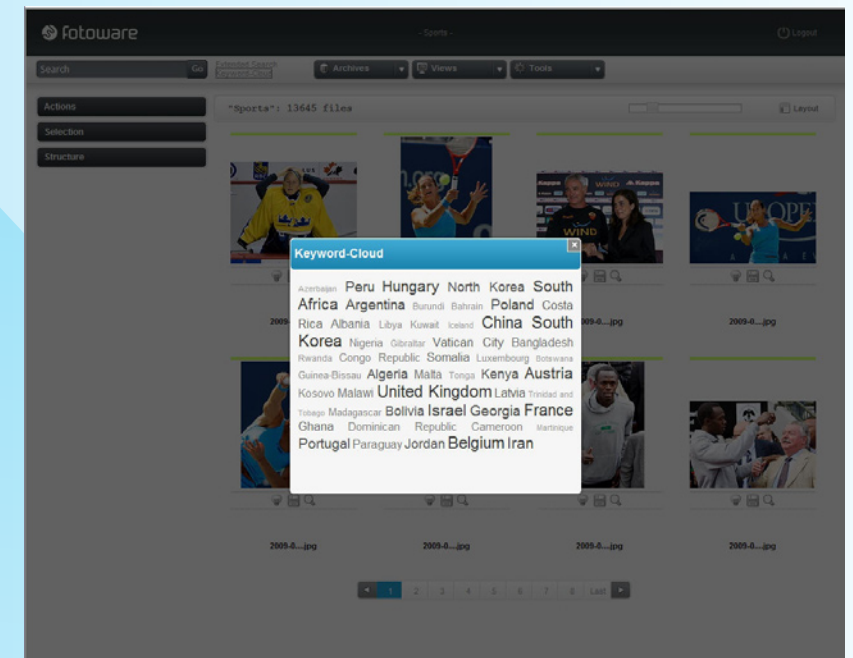
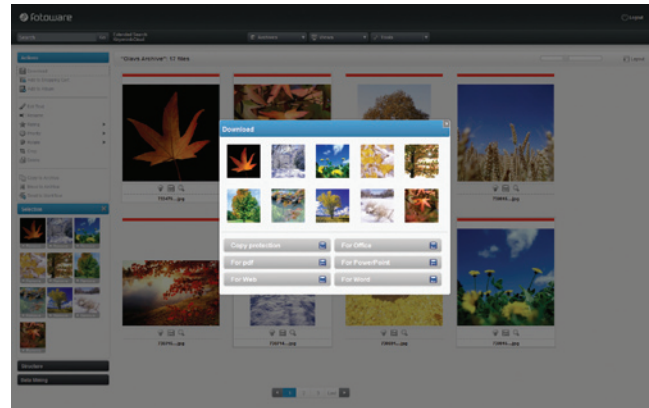


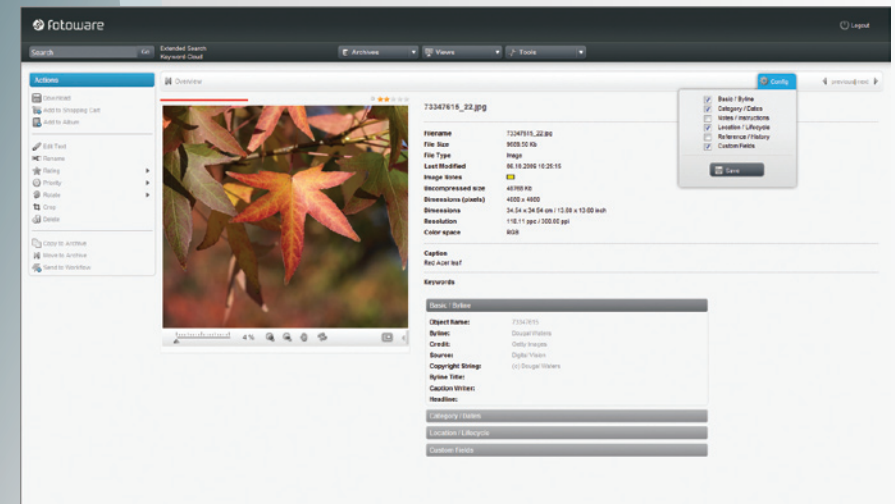
Image processing module



The new image processing engine enables on-the-fly image processing and delivery. When a user requests to download a file or order it using the shopping cart, preset profiles control file format and color space conversion, resampling (useful if you don't want to download a 300-megabyte TIF file), custom watermarking and application of unsharp mask. The delivery module can also easily be integrated with a FotoWare Color Factory server or third-party processing software for even greater control of the image processing.

Customizable web interface

End users control which information they want to see. This will be remembered in the browser.



Get in touch!

Ask our consultants and sales representatives how to solve your specific image and document problems and demands!

Get in touch with your nearest FotoWare Certified Partner for an appointment. FotoWare Partners are found in more than 40 countries around the world.

FotoWare a.s
OSLO
Phone: + 47 22 03 24 00
Email: fotoware@fotoware.com
Web: www.fotoware.com

FotoWare UK Ltd.
LONDON
Phone: + 44 (0) 129 343 4995
Email: info@fotoware.co.uk
Web: www.fotoware.co.uk

FotoWare Germany GmbH
HAMBURG
Phone: + 49 (0) 40 8787 966 60
Email: info@fotoware.de
Web: www.fotoware.de

Find your local FotoWare Partner: www.fotoware.com/ContactUs

